

# Public Document Pack



## OVERVIEW & SCRUTINY COMMITTEE

Tuesday, 31 January 2023 at 7.00 pm  
Conference Room, Civic Centre, Silver  
Street, Enfield, EN1 3XA

Contact: Democracy

Direct: 020-8132 1558  
Tel: 020-8379-1000

E-mail: [democracy@enfield.gov.uk](mailto:democracy@enfield.gov.uk)  
Council website: [www.enfield.gov.uk](http://www.enfield.gov.uk)

Councillors : Margaret Greer (Chair), Bektas Ozer (Vice-Chair), Maria Alexandrou, Nawshad Ali, Elif Erbil, James Hockney, Mohammad Islam and Michael Rye OBE

Education Statutory Co-optees: 1 vacancy (Church of England diocese representative), vacancy (other faiths/denominations representative), vacancy (Catholic diocese representative), Alicia Meniru & 1 vacancy (Parent Governor Representative).

Enfield Youth Parliament Co-optees (2)  
Support Officer – Marie Lowe (Governance & Scrutiny Officer)

## AGENDA – PART 1

### 4. **DRAFT COUNCIL PLAN 2023-26 – Investing in Enfield - Summary Slides** (Pages 1 - 16)

The report presents the draft new Council Plan 2023-26 for discussion and feedback: *Investing in Enfield* for discussion prior to approval of the final Plan by Council which is scheduled for February 2023.

This page is intentionally left blank

# Investing in Enfield

Enfield Council Plan 2023-26



# Council Plan Framework

Investing in Enfield		
Priorities	Principles	Future outcomes
<ul style="list-style-type: none"><li>• Clean and green spaces</li><li>• Strong, healthy and safe communities</li><li>• Thriving children and young people</li><li>• More and better homes</li><li>• An economy that works for everyone</li></ul>	<ul style="list-style-type: none"><li>• Fairer Enfield</li><li>• Accessible and responsive services</li><li>• Financial resilience</li><li>• Collaboration and early help</li><li>• Climate conscious</li></ul>	<ul style="list-style-type: none"><li>• Residents live happy, healthy and safe lives</li><li>• Residents earn enough to support themselves and their families</li><li>• Children and young people do well at all levels of learning</li><li>• Residents age well</li><li>• Residents live in good quality homes they can afford</li><li>• Residents live in a carbon neutral borough</li></ul>

# Our Principles

# Fairer Enfield

We are developing our understanding of how our services and projects impact different members of our community in different ways and using every opportunity to tackle longstanding inequalities and improve outcomes for people experiencing disadvantage.



# Accessible and responsive services



We want everyone who comes into contact with the council to have a positive experience of our staff, our buildings and the service we provide.

We will seek to continuously drive improvement in our services, ensuring they are accessible for and responsive to our diverse communities and partners.

# Financial resilience

We need to deliver excellent value for money in all that we do and target our resources smartly to enable us to meet the needs of our residents, now and in the future.

To do this, we will plan ahead carefully, making decisions based on evidence of what works, to deliver on the priorities in our Council Plan.





# Collaboration and early help



We work together with our partners to provide support as early as possible to children, young people, families and adults to prevent problems from escalating.

We will work closely with our residents and voluntary and community groups to empower them to take positive action in their neighbourhoods.

# Climate conscious

We are committed to becoming a carbon neutral organisation by 2030 and a carbon neutral borough by 2040.

To meet these targets, we must consider the impact of all our decisions on the environment and climate change.

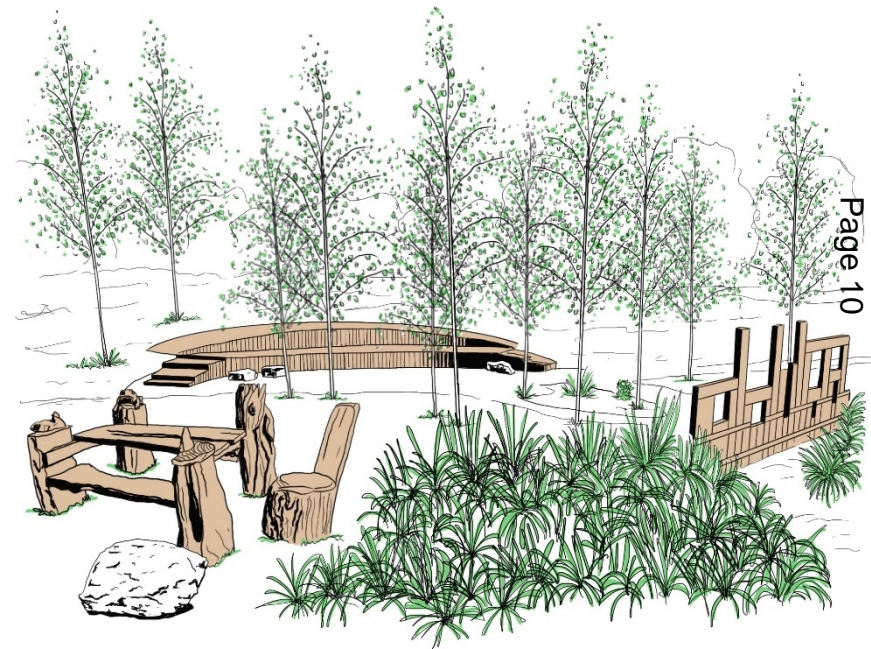


# Priorities and actions

# Clean and green places

## We will:

- Enhance biodiversity and protect our parks, open spaces, woodlands, watercourses, wetlands, trees and shrubs
- Keep our streets and public spaces clean and welcoming
- Enable active and low carbon travel
- Facilitate reuse of materials, reduce waste and increase recycling rates
- Reduce carbon emissions from our buildings, street lighting, fleet and the goods and services we procure



## Priority Two

# Strong, healthy and safe communities

### We will:

- Improve feelings of safety and tackle crime and antisocial behaviour
- Protect vulnerable adults from harm and deliver robust early help and social care services
- Work with our partners to provide high quality and accessible health services
- Support communities to access healthy and sustainable food
- Improve our leisure and sports opportunities to enable more active lifestyles
- Nurture our arts, heritage and creative sectors to connect people through culture

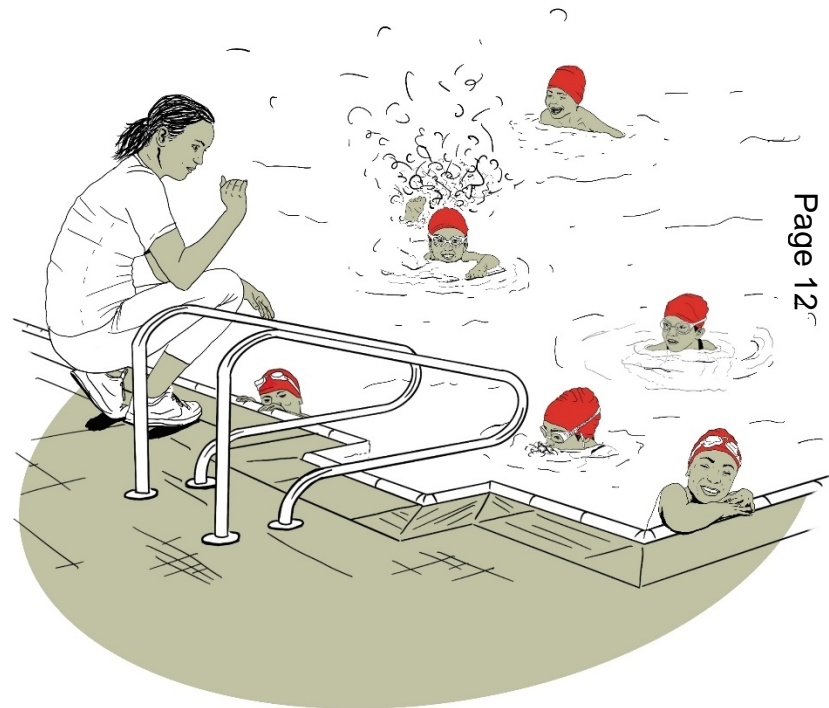


## Priority Three

# Thriving children and young people

### We will:

- Help all children to have the best start in life
- Safeguard children and increase support in -borough for looked after children with complex needs
- Improve educational outcomes for all children and young people
- Increase local education, play and leisure opportunities for young people with special educational needs and disabilities
- Engage children and young people in positive activities
- Involve young people in decisions that affect their lives



## Priority Four

# More and better homes

### We will:

- Build and facilitate more good quality homes that local people can afford
- Invest in and improve our council homes
- Drive up standards in the private rented sector
- Deliver low carbon and climate-resilient new-build homes, and facilitate retrofitting of existing homes
- Create well-connected, digitally enabled and well-managed neighbourhoods
- Provide a range of specialist housing for those who need it

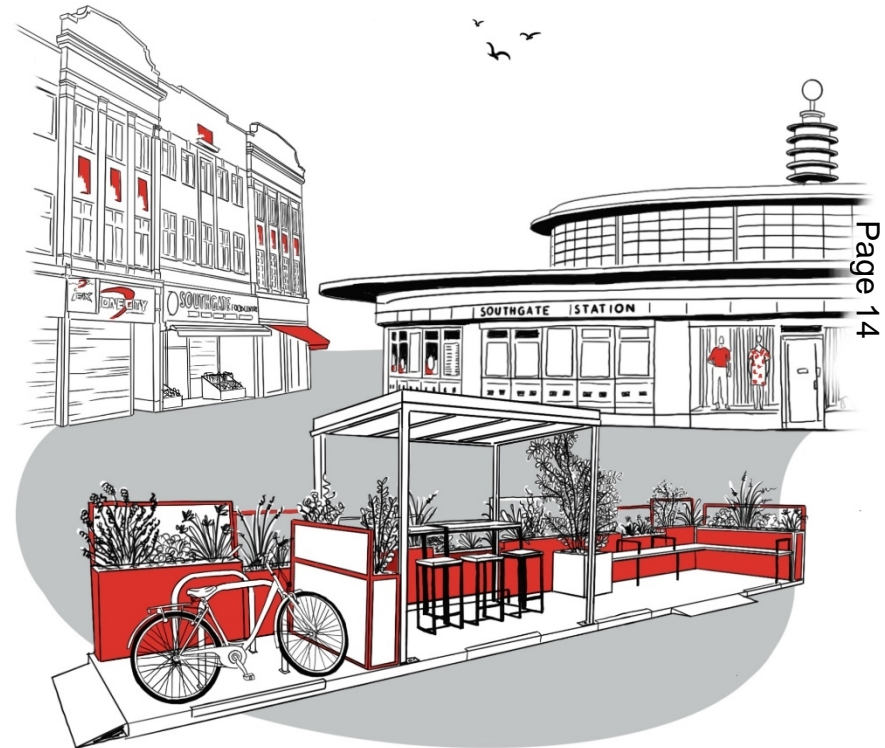


## Priority Five

# An economy that works for everyone

### We will:

- Enable local people to develop skills to access good quality work
- Support local businesses and encourage inward investment in growing sectors which offer sustainable employment to local people
- Provide support and advice for residents on low incomes
- Develop town centres that are vibrant, healthy and inclusive
- Transform our industrial land to create modern and low carbon spaces for business





# Future outcomes



**Residents live happy, healthy and safe lives**



**Residents earn enough to support themselves and their families**



**Children and young people do well at all levels of learning**



**Residents age well**



**Residents live in good quality homes they can afford**



**Residents live in a carbon neutral borough**